

KSPEN 2025

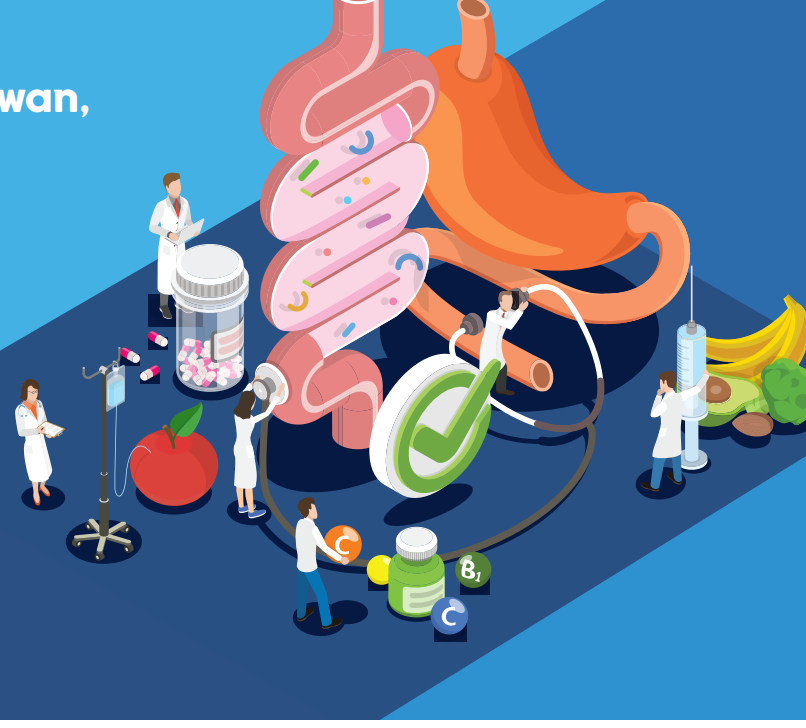
DATE_

June 13(Fri.) ~ 14(Sat.), 2025

VENUE_

Sejong University, Gwanggaeto-gwan,
Seoul, Korea

Collaboration
Across
Every
Role



Important Dates

**Deadline for
Abstract
Submission**

~ April 14 (Mon)
2025 24:00 (KST)

**Deadline for
Pre-
Registration**

~ May 26 (Mon)
2025 24:00 (KST)

[Go to Submission](#)

[Go to Registration](#)

Plenary Lecture

Plenary Lecture I

Chairperson: Ho-Seong Han (Seoul Nat'l Univ. Bundang Hosp.)

June 13 (Fri), 2025 / Room A, B



Subtle Factors Influencing Tube Feeding Access Route Decisions

Naohiro Washizawa
Toho University Omori Medical Center, Japan

Plenary Lecture II

Chairperson: Moo-Jun Baek (Soonchunhyang Univ. Cheonan Hosp.)

June 14 (Sat), 2025 / Room A, B



**The Future of Perioperative Care:
Synergizing ERAS, Nutrition, and Sustainable Healthcare Delivery**

Shu-Lin Gu
Chairman, Taiwan ERAS Society, Taiwan

Special Session I

Special Session I

Chairperson: Seung Wan Ryu (Keimyung Univ. Dongsan Hosp.)

June 13 (Fri), 2025 / Room A



The optimal rehabilitation: Challenges we faced

Mohammad Shukri Jahit
National Cancer Institute, Malaysia

[Register Now!](#)

Program at a Glance

Room A		Room B	
08:40~09:00	Opening Ceremony & Congratulatory Messages		
09:00~10:20	Symposium I Large-Scale Clinical Trials with Disappointing Results	09:00~10:20	Oral Presentation I
10:20~10:40	Coffee Break		
10:40~11:30	Plenary Lecture I		
11:30~12:20	Special Session I		
12:20~13:20	Luncheon Symposium I		
13:20~14:40	Symposium II Geriatric Nutrition	13:20~14:40	Joint Session I: ERAS KSPEN-KSSMN
14:40~15:30	Policy Session		
15:30~15:50	Coffee Break		
15:50~16:55	Symposium III Collaborative Roles and Challenges in TPN Clinical Research	15:50~17:10	Education I Nutritional Information and Special Diets (Korean)

June 14 (Sat), 2025			
Room A		Room B	
09:00~10:20	Symposium IV Pros and Cons: Beyond the Debate on Micronutrients, Probiotics and Antioxidants	09:00~10:20	Oral Presentation II
10:20~10:40	Coffee Break		
10:40~11:30	Plenary Lecture II		
11:30~11:50	Presidential Lecture		
11:50~12:20	General Assembly		
12:20~13:20	Luncheon Symposium II	12:20~13:20	Luncheon Symposium III
13:20~14:40	Symposium V Nutritional Issues and Solutions in Cancer Survivors	13:20~14:40	Education II Multidisciplinary Approaches to Acute Neurological Diseases: From Acute to Rehabilitation Phase (Korean)
14:40~16:00	Symposium VI Trend of Nutrition Assessment Strategy	14:40~16:00	Symposium VII Disease Specific Nutritional Consideration in NICU
16:00~16:20	Coffee Break		
16:20~17:40	Symposium VIII Nutrition Care In a New Era	16:20~17:40	Education III Community-Based Nutritional Support and Nursing Care: Ensuring Continuity After Discharge (Korean)
17:40	Closing Ceremony		

** Program may be subject to change.

Travel Grant

KSPEN 2025 provides Travel Grants to support overseas participants with travel expenses. This grant is designed to encourage greater participation and facilitate academic exchange at the congress.

Eligibility & Grant Details

- The grant is open to presenters traveling from abroad whose abstracts have been accepted for oral or poster exhibition.
- Presenters will receive USD 300 for oral presentations and USD 200 for poster exhibitions.
- To qualify, presenters must travel from abroad, attend the congress in person, and either give an oral presentation or display their poster on-site.

Travel Grant Awards will be distributed during the congress upon verification of in-person attendance and participation.

We look forward to welcoming outstanding presenters from around the world to KSPEN 2025 and fostering meaningful discussions throughout the event.

Award

Oral Presentation & Poster Exhibition Award

Outstanding abstracts will be awarded at the closing ceremony.

June 14 (Sat.), 2025

Award money will be given to the winners.

Abstracts will be reviewed by the Scientific Committee.

- Excellent Oral Presentation : USD 500
- Best Oral Presentation : USD 200
- Excellent Poster Exhibition : USD 300
- Best Poster Exhibition : USD 100

[Go to Registration](#)